

# RCD AND VALVE SOLUTIONS



  
**PREMIUM**<sup>®</sup>  
Oilfield Technologies

# Rotating Control Devices

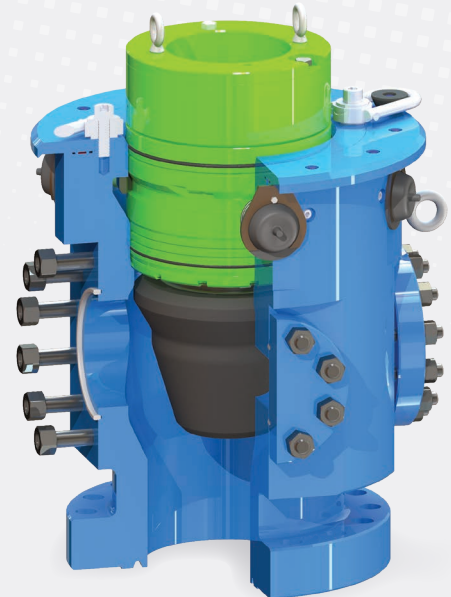
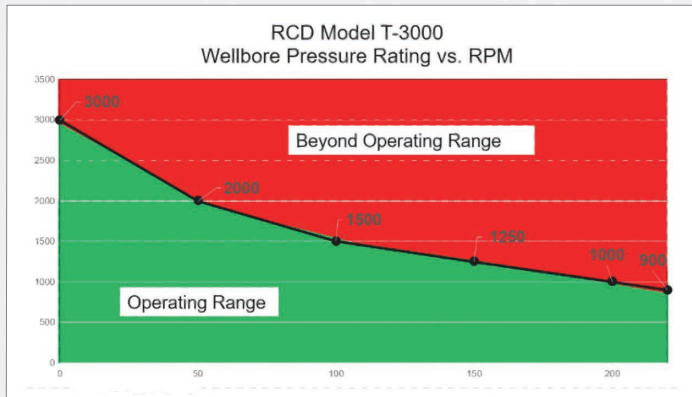
Premium Oilfield Technologies patented RCD clamp systems and sealed bearing technologies have been a field-proven benchmark in the industry for over 10 years. Our second generation latching mechanisms and integrated hydraulic reservoir solutions have reset the bar for RCD technology.

Premium has an experienced team on hand to discuss specific rig needs with multiple models, working pressures, and customizable options available. We specialize in providing the safest to operate and most field maintainable rotating control devices in the industry, with all installations customizable to our clients' rig specifications. Our mission is to provide customers with the most fit-for-purpose rotating control system available paired with wellsite personnel service for the global oilfield market.

We prioritize safety above all else. All Premium products are fully tested to rigorous standards, including our RCDs that are dynamically tested before delivery to each rig. We guarantee all equipment meets the highest safety standard and all RCDs are checked by our service personnel bi-weekly at the wellsite. If attention is required, our RCDs are serviceable directly from the rig floor.







## Premium RCD T3000

The revolutionary Premium RCD T3000 features a 100% integrated bearing lubrication and hydraulic latching system.

- Low profile dimensions – 43" OAH w/ bearing assembly, 36" w/ stripping assembly
- Fail safe closed - hydraulic latch (No HPU Req.)
- Self lubricated bearing – integrated reservoir
- Bottom flange - 13-5/8" 5K or 11" 5K
- Outlet flanges - (2) 4-1/16" 5K, 7-1/16" 3K, 9" 3K
- 3000 static psi / 1800 dynamic psi
- 220 rpm max
- Single element sealing elements – nitrile, polyurethane – slip on style

## Premium RCD T2000

The Premium T2000 is one of the most compact RCD systems available, and is customizable to any rig specification.

- Low profile RCD measuring 33.25" tall with bearing assembly installed
- High pressure – 2000 static psi / 1200 psi @ 100 rpm
- Hands-free bearing latch system – no HPU required
- Self-lubricated – sealed bearing assemblies with oil level inspection port
- 9" pass through for up to 6-5/8" drillpipe
- Rated for up to 220 rpm
- Quick change sealing element system



# Legacy Cutter RCDs

Premium legacy RCDs feature our patented dual hinge clamp system. It provides a safer solution to bearing retention allowing for a single operator to easily open and close the band, even in small spaces. The clamping system is available in manual, hydraulic or pneumatic configurations.

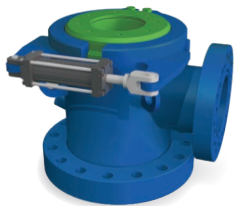


PNEUMATIC CLAMP



## Premium Gen 1.5 Bearing Assembly Upgrade

- Can be used in legacy Cutter RCDs with no modification to body
- Self lubricating bearing with integrated fluid reservoir
- Can be used with manual or hydraulic latching
- Slip on style sealing elements available in Nitrile or urethane



## Cutter RCD 1000

- 500 working psi / 1000 static psi
- User friendly
- No drive bushings required
- Sealed bearing – no oilers or airlines needed
- Height can be modified to eliminate spacer spools and lower cost
- Upgrade to 1000 psi Dynamic pressure using the Gen 1.5 Bearing Assembly



## Intermediate Cutter RCD 2000

- 1000/1500/2000 psi
- Variety of sizes for bottom flange
- 9-2m outlet studded / orbit valve bolts directly to head
- 7-3m outlet
- 4-5m outlet
- 2" nipple for fill-up line
- Use with manual or hydraulic clamps
- Pre-studded outlets for convenience when attaching flow line or optimal orbit valve



## Sur-TORK Electric Variable Valve

Utilizing Premium's Tru-Flow Software, the Sur-TORK Variable Valve is the world's first and only quarter turn valve capable of precise set-point pressure control.

Rugged design and high torque output ensure continuous duty and provide the user with optional connections, eliminating the need for multiple boxes.

## The perfect solution for handling waterflows

- Available with 9"-3K API flange connections, segmented ball design with 6" & 8" Full Bore and Vee Ball options
- Able to trap pressure on connections, thus maintaining well-bore integrity
- Capable of set point pressure control and ramp schedules
- Can be utilized as an open-close and a variable control valve, eliminating the need for additional equipment.
- Cloud-connected for remote monitoring and adjustment from anywhere in the world.



**TRU FLOW**

DIGITAL POSITION INDICATOR  
WITH TOUCHSCREEN

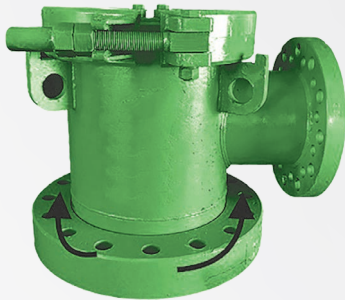


## MP-680 & MP-880 Control Valve Specifications

Valve Type	6" Control Valve	8" Control Valve
<b>Dimensions</b>	L=29.12", H=49.5" with actuator mounted	L=29.12", H=52.7" with actuator mounted
<b>Flange Type and PSI Rating</b>	9" 3K API flange, 3000psi static, 200psi dynamic	
<b>Weight</b>	Valve 1065 lbs, with gear & actuator 1470 lbs	Valve 1275 lbs, with gear & actuator 1680 lbs
<b>Ball Type</b>	6" segmented ball, 60deg v or full bore	8" segmented ball, 60deg v or full bore
<b>Gear Torque with RTM- 20N Sur-TORK Actuator</b>	6400 ft/lbs peak 2000 ft/lbs continuous modulating (6 seconds open-close @ 230V)	
<b>Backlash</b>	10 arc minutes	8 arc minutes
<b>Interface</b>	ISO 5211 F16	
<b>Shaft Size</b>	2.00" x 1/2" sq key	2.50" x 5/8" sq key

# Customizations & Accessories

Premium offers several options and accessories for customizing your RCD to fit each rig and contractor's specific needs.



## Spinner Bowl

We can modify the overall bowl height and flowline center on our low pressure and spinner bowl products for any project requirement.

- Can rotate 360° while bolted to annular
- Customizable flowline outlets to cross over from the valve or dresser sleeve can address most needs
- Custom height to eliminate extra cost associated with spacer spools or risers
- Available in RCD 1000, 1500 or 2000 formats and pressures

## Height and Outlet

On our low pressure and spinner bowl, we can customize to the center of flowline and for the overall height.

- Flowline outlets are also compatible to meet specific needs for all flowline requirements
- True bore flowline from 6"-14" which cuts down on restriction and maximizes flow
- "Shorties as low as 19" overall height on 11" stacks and 21" on 13" stacks



## Monitor Back Pressure

We offer the ability to monitor the back pressure of the wellbore on the top side by adding a gauge and lines off our RCD and running it up to the floor or driller shack for more accurate monitoring. This works great for drilling underbalance or inflow/pressure zones.

## Pneumatic Ball Valves (2 way)



### 11 - 2K Ball Valve

- 10" bore
- R - 53 ring gasket
- 1480 psi



### 4 - 5K Manual

- 4" bore
- R - 39 ring gasket
- 5000 psi



### 9 - 2K Ball Valve

- 8" bore
- R - 49 ring gasket
- Series 600 - 1480 psi
- Series 900 - 2200 psi



### 7 - 3K Valve

- 6" bore
- R - 45 ring gasket
- 2440 psi

## Rotating Head Accessories



Premium offers a complete line of rotating head accessories for your rig's rental needs.

- Spare legacys
- Logging adapter (7' 8 rd)
- Drilling nipple
- Casing stripper 5.5", 7", 7-5/8", 8-5/8", 9-5/8" and 11 5/8"
- Inventory basket
- Starting mandrels
- Flowline companion
- Spin on and bolted bearings
- DSAs and spools, all sizes available
- Air actuated hinge clamps
- Air valves

## Cutter Splash Pan



### Environment friendly waste management

Premium's splash pan system allows the user to keep containments controlled with adaptability to tailor each rig.

- Recycles / reroutes muds and fluids
- Keeps work area under rig clean
- Lowers mud cost
- Split design for fast rig up
- Bolts on top of all Cutter RCDs or any riser not annular
- 25', 50' of 4" hose to route to your preference
- Adjustable arms make for universal rig up, tall or short
- Static-free, 20 mil heavy duty PVC coated and UV resistant tarps for extreme conditions



## CORPORATE

### Premium Oilfield Technologies - USA

10600 W. Sam Houston Pkwy. North  
Houston, TX 77064  
T: +1 281.670.5200

## MANUFACTURING & REPAIR

### *Premium Drilling Equipment and Support*

9841 Windmill Park Ln.  
Houston, TX 77064  
T: +1 281.670.5200

### *Patriot and Urethane*

10600 W. Sam Houston Pkwy. N.  
Houston, TX 77064  
T: +1 281.670.5228

### *West Texas Operations All Divisions*

10207 West Industrial Ave.  
Midland, TX 79706  
T: +1 432.563.2328

### *Patriot Screens*

4602 S. MacArthur Blvd.  
Oklahoma City, OK 73179  
T: +1 405.470.6553

### *Canada Operations All Divisions*

107-6704-41 Street  
Leduc, Alberta  
Canada T9E 0Z4  
T: +1 877.593.0034

## FIELD SALES, SERVICES AND REPAIR OFFICES

California / Colorado / Louisiana / New Mexico / North Dakota / Oklahoma / Pennsylvania / Texas / Utah / Wyoming

## INTERNATIONAL

### KUWAIT

**Premium Oilfield Technologies**  
P.O. Box 721  
Yarmouk, Kuwait 72658  
T: +965 99679126  
T: +965 66022296

### UAE

**Premium Oilfield Technologies Trading LLC**  
P.O. Box 89561  
Dubai, UAE  
T: +971 55 889 7210  
T: +971 56 986 3834

### INDIA

**PMR Mud Riggers India Private Limited**  
S-Block-232, MIDC  
Bhosari, Pune MH 411026  
India

### UAE

**Premium Oilfield Technologies FZE Top Drive Solutions**  
S700, PLOT S30229  
Jebel Ali Free Zone (South)  
P.O. Box 262263  
Dubai, UAE  
T: +971 4 889 4897  
T: +971 506587570

### SAUDI ARABIA

**Premium Mud Pumps Trading Est.**  
P.O. Box 956  
Dammam, KSA  
Postal Code: 31951  
T: +966 50 0157516

### UAE

**Premium Oilfield Technologies FZE Mud Pump Solutions**  
S700, PLOT S30229  
Jebel Ali Free Zone (South)  
P.O. Box 262263  
Dubai, UAE  
T: +971 4 889 4897  
T: +971 558897210



Premium Oilfield  
Technologies  
Q1-3977

sales@premiumoilfield.com  
premiumoilfield.com